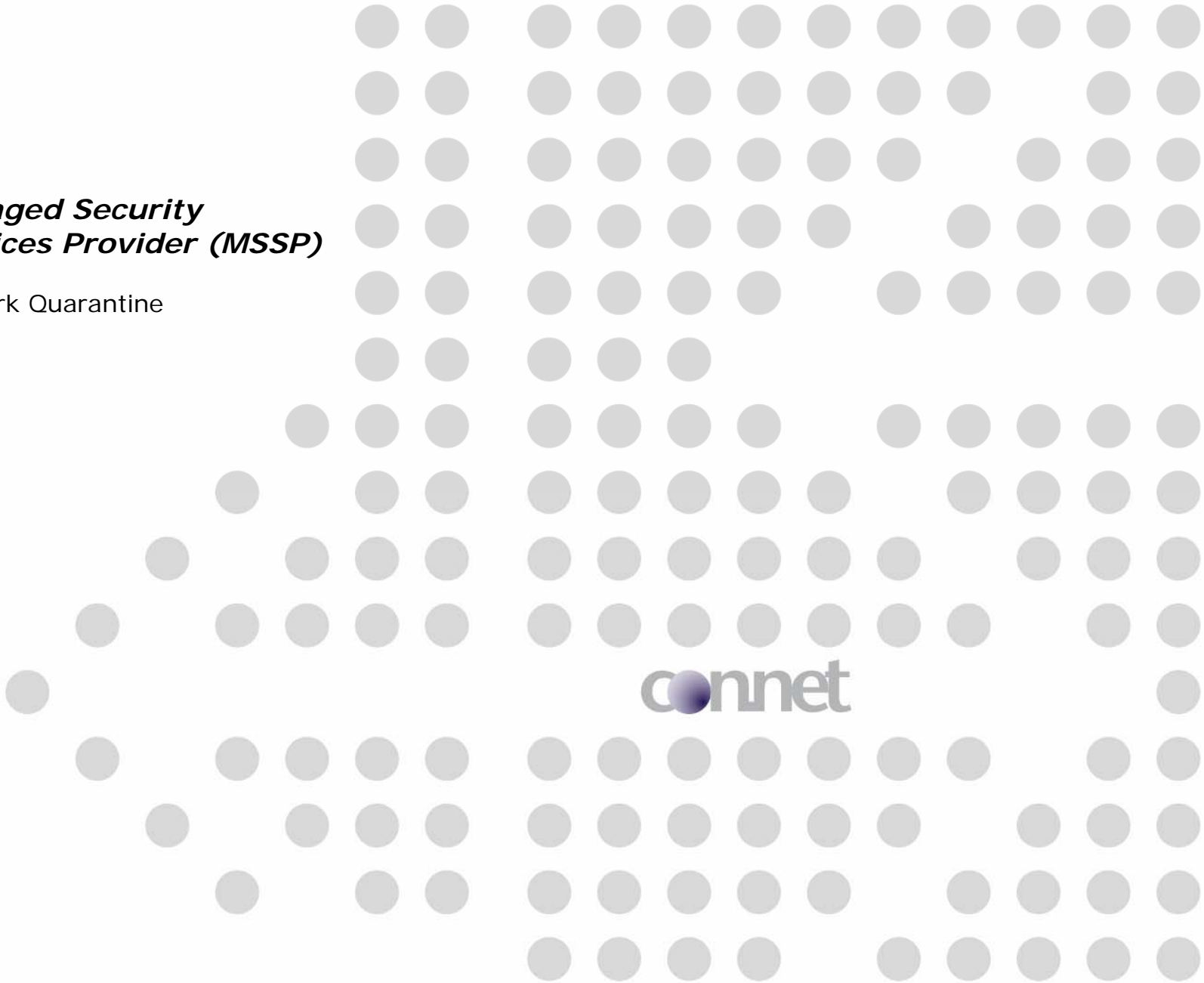


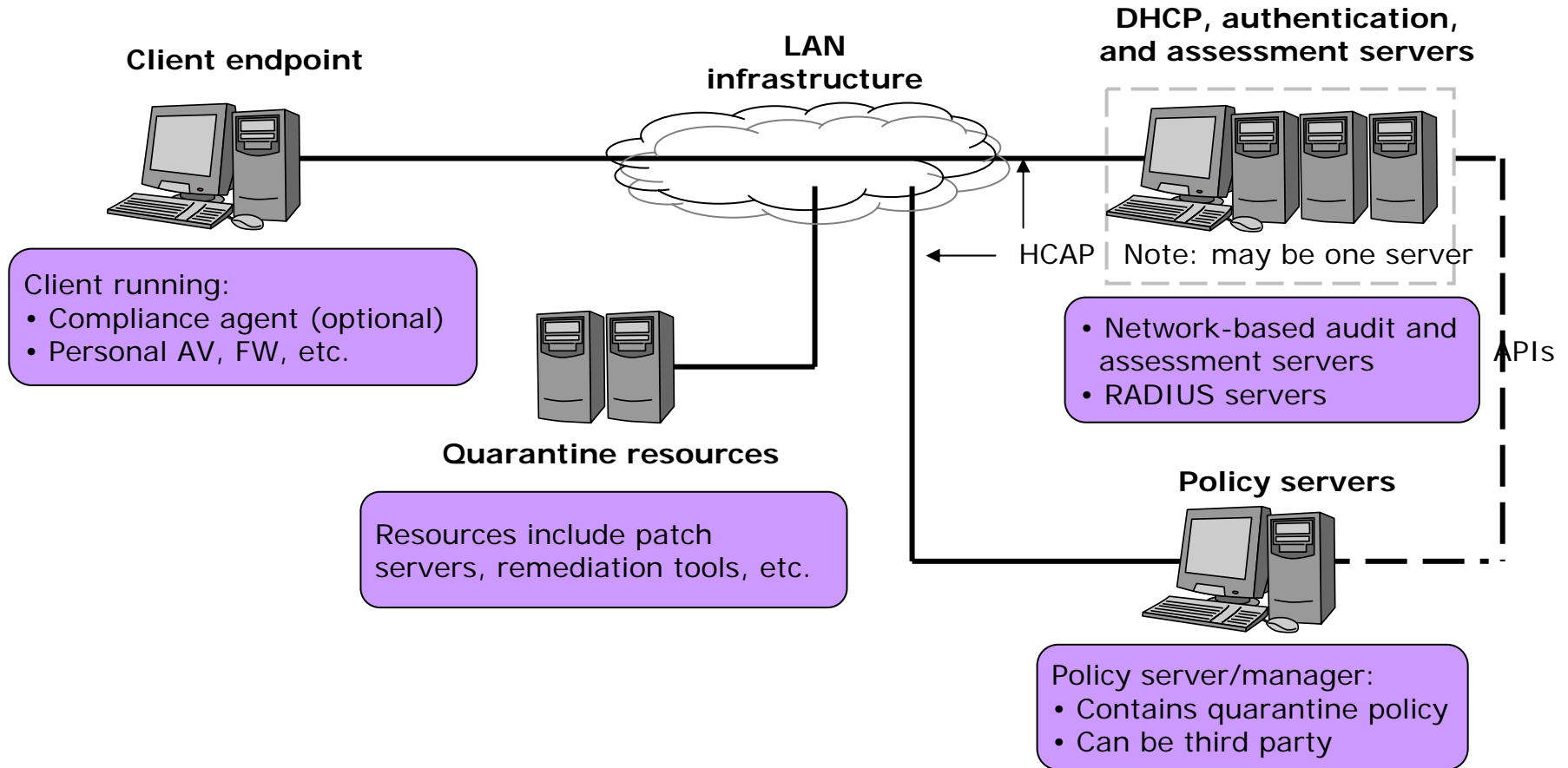
***Managed Security
Services Provider (MSSP)***

Network Quarantine

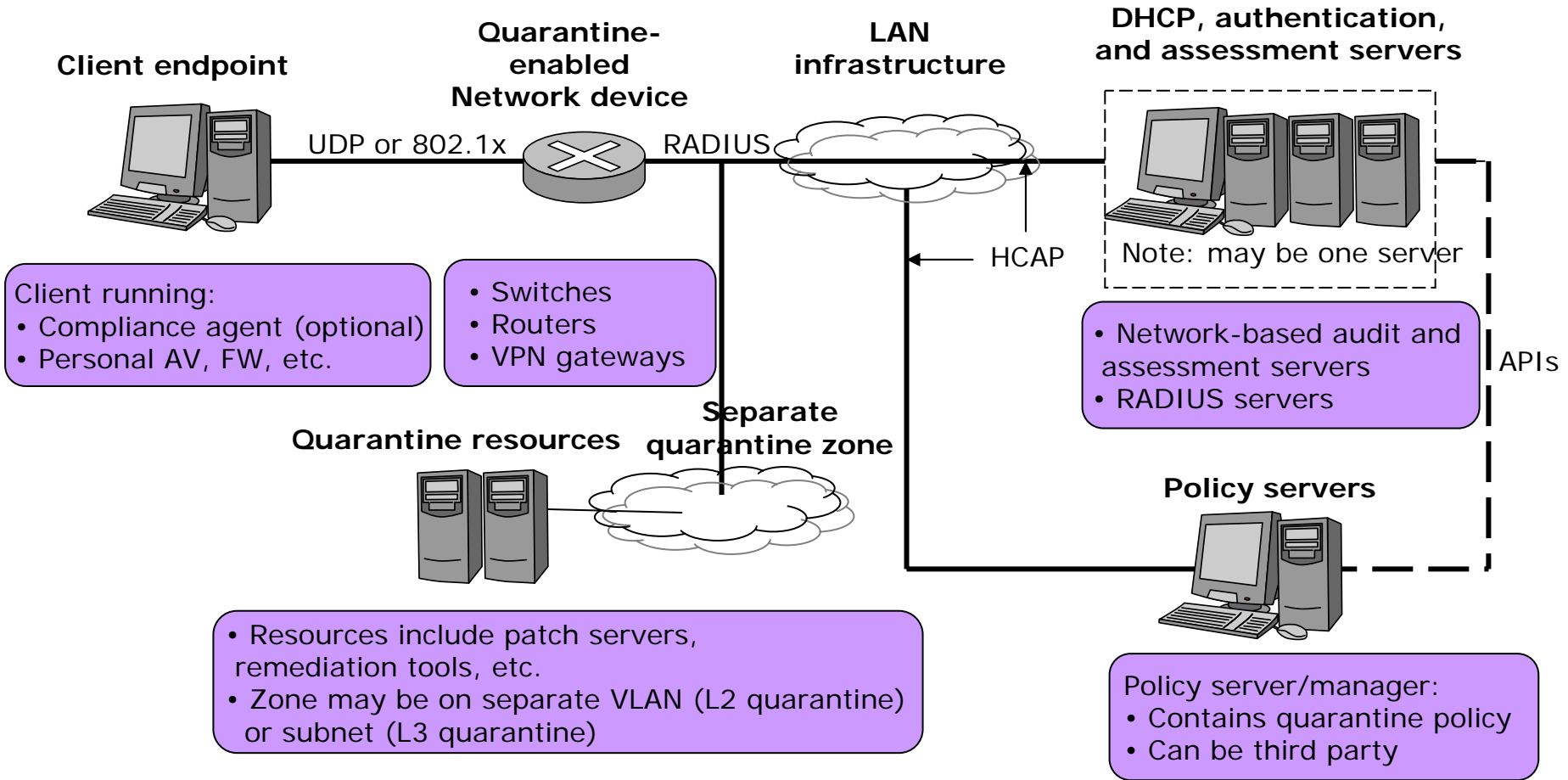
connet



server-based quarantine



port-based quarantine



network quarantine categories

Network quarantine category	Port-based		Server-based
Architecture	Appliance	Switch	Software
Deployment type	Overlay: standalone network device	Integrated: existing network device	Overlay: standalone or server-integrated software
Ideal network type	Simple	Medium to complex	Simple to medium
Client software	Optional	Required	Not required
Policy server (AD, LDAP, or RADIUS)	Not required, but recommended	Required	Required
Deployment options	In-line and out-of-band	In-line	Out-of-band
Primary quarantine mechanism	Layer 2: VLANs and switch control	Layer 2: VLANs	Layer 3: DHCP
Approximate price	Expensive	Moderately expensive	Inexpensive

network complexity

	Simple	Medium	Complex
Access	<ul style="list-style-type: none"> ● Wired: Fast Ethernet ● Wireless: little to none ● Remote access: little to none 	<ul style="list-style-type: none"> ● Wired: Fast Ethernet ● Wireless: overlaid 802.11b/g ● Remote access: IPsec VPNs 	<ul style="list-style-type: none"> ● Wired: Mixed Fast and Gigabit Ethernet ● Wireless: integrated or overlaid 802.11a/b/g ● Remote access: mix of SSL and IPsec VPNs
Endpoint	Windows desktops	Multi-OS desktops and PDAs	Multi-OS desktops, PDAs, servers, and non-standard devices (printers or IP phones)
Network	Single-vendor	Single-vendor network and security devices	Multi-vendor network and security devices
Network topology	Flat: relatively few VLANs and subnets	Tiered: less than 10 VLANs and subnets	Hierarchical: 10 to 100 VLANs and subnets
Number of endpoints	Less than 5,000 nodes	Between 5,000 and 50,000 nodes	Greater than 50,000 nodes
Number of sites	Less than 10 sites	Between 10 and 50 sites	Greater than 50 sites

decision tree

